



PROMETHEUS
MEDICAL LTD (MENA)

Russell Chest Seal™

Emergency Chest Seal with Integrated Valve for Open Chest Wounds



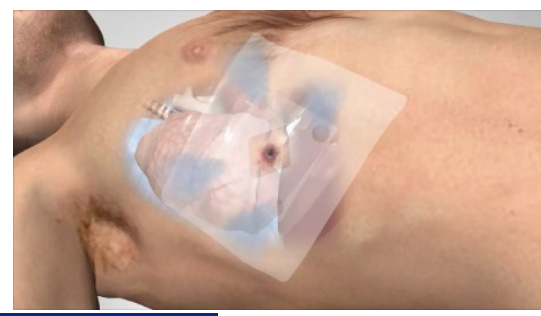
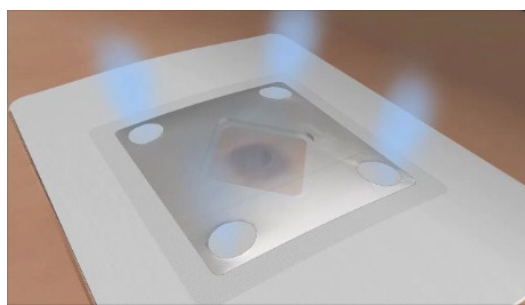
- Fast, easy and intuitive to apply
- Patented Hydrogel base - *Sticks and Stays Stuck!*
- 4 large peripheral apertures allow drainage of air and blood
- Large central hole in base material allows quick accurate placement with reduced risk of obstructing the wound opening
- Low profile and highly flexible
- Compact: easy to pack into medical kit

NSN: 6510-99-490-5137

The Russell Chest Seal™ is a new and innovative dressing that answers all the questions posed by existing Chest Seals. It is Latex Free, highly adhesive yet easily removed and functions extremely well even in the presence of Blood or Fluids. By providing 4 separate apertures the need to orientate the dressing to deliberately position a valve in a gravitational downward direction is eliminated. The Russell Chest Seal™ is very flexible and will conform easily to all skin surfaces. It is packed ready folded thus taking up very little space once packed in the Medical Kit.

The Russell Chest Seal™ uses the same Hydrogel Technology as in our Nightingale Dressing. The dressing is capable of excellent adherence despite the presence of blood, sweat, hair or water.

The Russell Chest Seal™ is one of the largest Chest Seals currently available being 20cm x 15cm.



Specifications	
Size	20cm x 15cm
Pack Size	14cm x 13cm
Weight	20.5 grams
Price	Available on request



Prometheus Medical Ltd
 The Old Rectory, Hope Under Dinmore,
 Herefordshire HR6 0PW
 T: +44(0)1568 613942 F: +44(0)1568 620032

Prometheus Medical Ltd (MENA)
 1st Floor, Al Ahli Bank Building, Al Wakra Branch,
 Al Wakra Main Street, PO Box 172222, Doha, Qatar
 T: +974 447 700 73/5 F: +974 447 700 71