



Introduction

Blue-Spirit is a Dutch company based in Werkendam, close to the Rotterdam port. We specialize in designing and building patrol and rescue boats. Our Rigid Hull Inflatable Boats (RHIB's) are first in class and custom build according your specifications.

Blue-Spirit stands for the best design and best price in the market. All Blue-Spirit boats will be built in the Netherlands; the Dutch craftsman is the backbone of this product. The Blue Spirit boats will be delivered with state of the art accessories and engines.

All Blue-Spirit boats have been classified CE-B and we are working on SOLAS classification for our fast rescue boats. The 15 years experience in the boat building industry gives the client the possibility to order custom built boats. No nonsense, fair pricing!



Why Blue-Spirit?

- Strong GRP hulls by handlay up system
- Optional non wood and vacuum injection
- Choice in Hypalon air or PU foam collar fenders
- Choice in engines and propulsion
- Build to class according your specs
- Perfect sea handling
- Build in Holland
- Very attractive pricing

Do your require more detailed information about our Blue-Spirit patrol boats or take one for a test run, don't hesitate to call or visit our showroom and factory in Werkendam (The Netherlands)..



Standard specification

Hull and fender:

G.R.P hull, hand layup 10mm, grey gel coat, anchor compartment at bow with bollard, inox bow ring, 3 mooring points, inox protection strip at bow, self-draining non-skid deck, flaps at water outlet to prevent water intake, removable Hypalon air tubes with 5 separate chambers (incl. pressure release valves) or removable PU closed cell foam tubes, Hypalon cell foam tubes, 4 inox lifting eyes. Hull layout for outboard, mid engine and stern engine have same prices.

Steering console:

F.R.P sandwich panels with aluminium grip rails on frame, console windshield with safety glass in aluminium frame, compartment under console for toilet (option) or storage, hatch with twist lock without key.

Fuel tank:

Aluminium fuel tank: 200 L capacity standard, extra capacity (option), deck fuel filler.

Miscellaneous:

5-Switch waterproof panel, fire extinguisher, navigation lights, auto bilge pump, battery switch, battery boxes, user manual, repair kit, instruction of at factory acceptance

Optional specification

Hull:

Non wood by using Divinycell; Vacuum injection system in complete hull

Seats:

Suspended jockey seats with black cushions and backrest and grip handles or jockey seats with aluminium back rest and cushions and FRP locker with hatch or aluminium leaning point with black cushions or bench for 2 persons with folding backrest complete with locker under seat

Radar beam:

Aluminium radar beam with collision protection, self righting system (option)

Bimini tops:

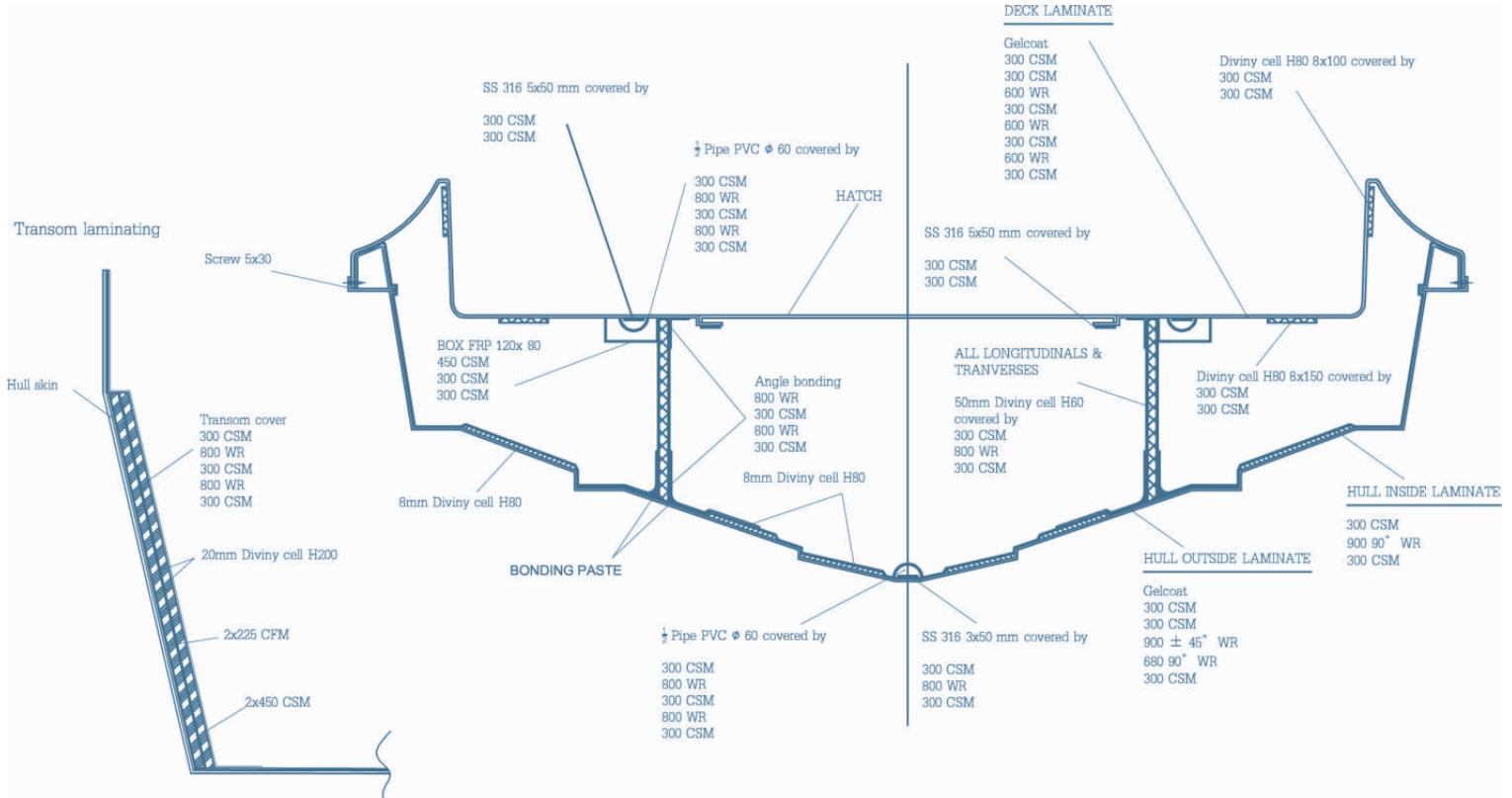
Black aluminium frame complete with canvas bimini or FRP top with compartment

Engines and propulsion: (option)

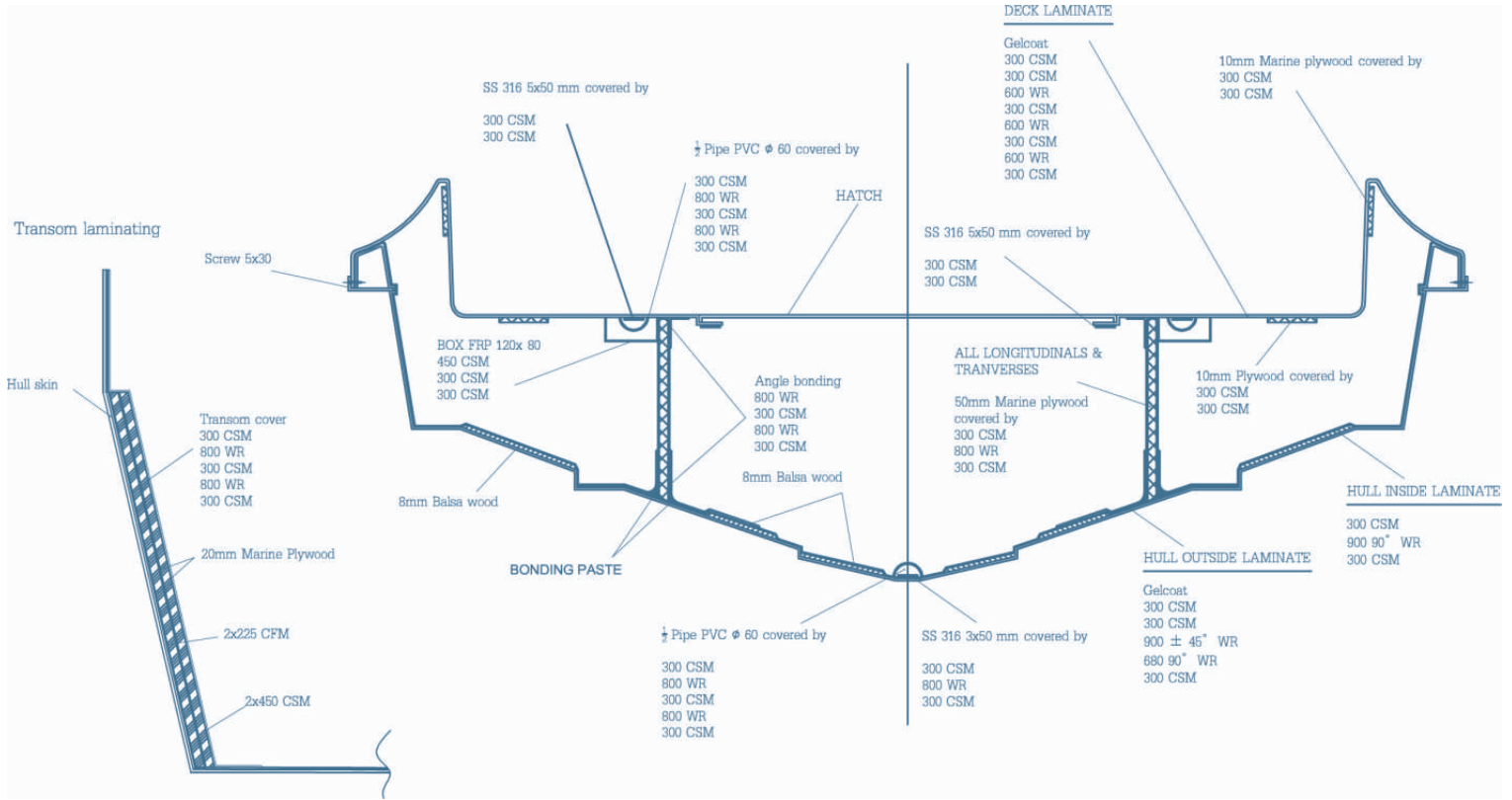
All major outboard or inboard engines can be build in according your wishes, jet, surface or stern drive propulsion, complete instrument gauges as supported by engine manufacturer, remote control, cable or power steering system

Engines and propulsion: (option)

Closed aluminium wheelhouse; GPS plotter; VHF radio; Radar; Search light; Infrared night vision camera; PTO; Hydraulic winches



Yard		SC : NTS	Position	Name	Sign	Day
Project	EOS RIB	Drg No.	Designed			
			Drawn			
Title	HAND LAMINATE SCEDULE DIVINYCELL	Date:	Checked			
			Approved	E.O.S		



Yard	SC : NTS	Position	Name	Sign	Day
		Designed			
Project	EOS RIB	Drg No.			
		Drawn			
Title	HANDLAMINATE SCEDULE WOOD	Date:			
		Approved	E.O.S		



ORCA® 866

Division Produits techniques
Technical Products Division
Version n°1 8 du 20/04/09

Base fabric: Polyester High Tenacity 1670 dtex – 1500 deniers
Coating : Ext Chlorosulfonated Polyethylene (CSM) / Polychloroprene (CR)
Int : Polychloroprene (CR)

Specification	Standard-Test	Direction	Result (Imperial)	Result (Metric)
Surfacic Mass	ISO 2286-2 FSTM 191/5041		44,24 ± 4,42 oz/yd ²	1500 ± 150 g/m ²
Tensile Strength	ISO 1421 ASTM D 751 / B	CH (W) TR (F)	≥ 561,8 lbs/in ≥ 516,9 lbs/in	≥ 500 daN/5cm ≥ 460 daN/5cm
Tear Resistance	ISO 4674-1 ASTM D 751 / B	CH (W) TR (F)	≥ 74,19 lbs ≥ 78,68 lbs	≥ 33 daN ≥ 35 daN
Permeability (Helium) Zeppelin Test	NFG 37 114			≤ 2,5 l/m ² /24h
Peeling Test Adhesion	ISO 2411 ASTM D 751		≥ 16,85 lbs/in	≥ 15daN/5cm
Low Temperature Resistance	NF EN 1876-2 ASTM D 751		≤ - 4 F °	≤ -20°C
Heat Aging 7 days at 158 F (70°C)	NF EN 12280 - 1		Mechanical prop. Unchanged	
Hydrocarbon Resistance	ISO 1817		Mechanical prop. Unchanged	

Standard width : 57 in – 145 cm (edge cut)
Standard colours : Please refer to the ORCA® catalogue

The information supplied herein is based upon data currently available. Suggested applications are purely indicative and do not imply any warranty on serviceability. The client should always proceed with its testing and validation. Pennel & Flipo makes no guarantee of results and assumes no obligation or liability whatsoever in connection with this information. There are no warranties, either expressed or implied, including the warranty for fitness or merchantability, unless expressly set forth herein.

DOC.COM/ 5 / B – 15/04/09



102, boulevard de l'Eurozone
7700 Mouscron
Belgium
www.pennel.fr

Tel: +32 56/39 21 007700
Fax: +32 56/39 21 01
Email: orca@pennel.fr

Polyurethane SC-910 Information

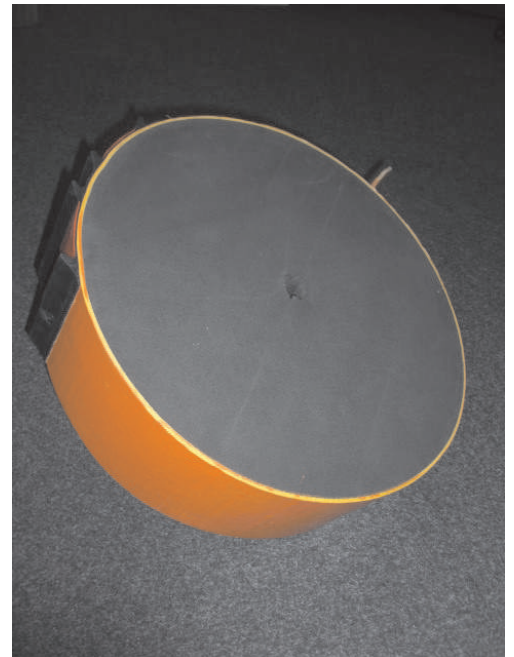
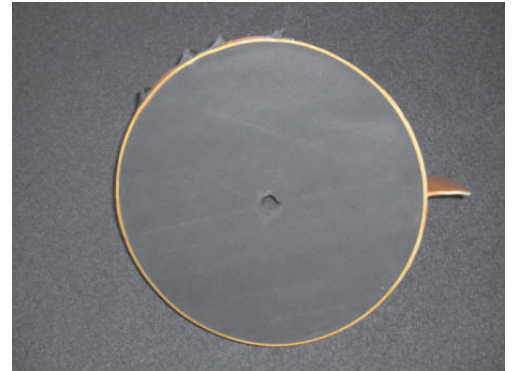
SC910 is a high 100% solidified component dual liquid polyurethane flexible resin, which will be sprayed on water resistant closed cell foam.

Properties of product:

1. Thickness of PU after spraying about 536 mm
2. Special superior wear resistance, excellent anti-rupture and high waterproof and anti-chemicals
3. It can resist against high temperatures till 120°C and low temperatures till -34°C. It never causes cracking, melting, etc. if it exposed to high temperature (250°C) for a short period of time.
4. 100% solidified component. It contains no organic solvent, poisonless, to meet the requirements of environmental protection
5. Excellent weather-resistant, ultra violet protection, good adhesive. Never aging and cracking.

Typical physical property:

		Main A
- Tear strength (kg/cm ²)		Over 45 kg/cm ²
- Tensile strength (Mpa)		Over 8.5 Mpa
- Puncture resistance		Good
- Elongation (%)		Over 400%
- Moisture vapour (%)		Under 2 g/h m ²
- Transformation	40°C, 90%RH, 4mm testing sample	
- Flash point (PM)		
	Main	Over 135°C
	Hardner	Over 140°C
- Gas resistance (premium gasoline 48h)		Normal
- Flexibility	23°C	300° OVER
	-20°C	300° OVER
	-40°C	300° OVER





Patrol 6.5m

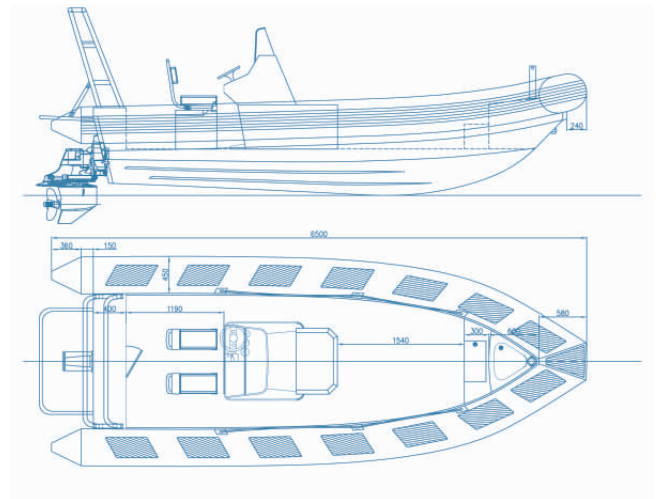
Specifications:

Length (meters)	6.50m
Beam (meters)	2.42/2.52m
Draft (meters)	0.40m
Tube (meters)	0.45/0.55m
Weight (kilogram)	905kg
Fuel tank	200l
Max persons	7



Options:

- Outboard engine max 200 hp
- Max 150hp inboard
- Radar beam
- Self righting system
- Single lifting frame with quick release hook
- Foam collar
- Suspension seats
- GPS, radio, radar



Console:

FRP console small	50kg
FRP console medium with storage room	60kg
FRP console wide with storage room	70kg
FRP console with mid engine compartment	85kg

Inox protection with contra support:

1/3 bow	30kg
1/1 bow	80kg



Patrol 7.5m

Specifications:

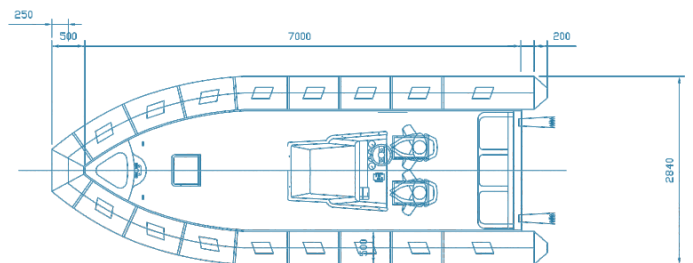
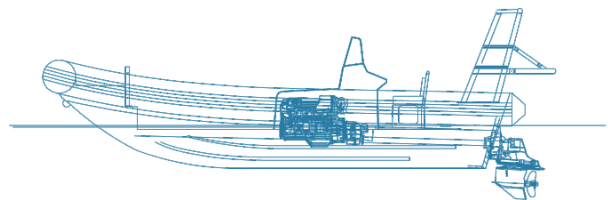
Length (meters)	7.50m
Beam (meters)	2.42/2.52m
Draft (meters)	0.40m
Tube (meters)	0.45/0.55m
Weight (kilogram)	985kg
Fuel tank	200l
Max persons	8

Options:

- Outboard engine max 250 hp
- Max 200hp inboard
- Radar beam
- Self righting system
- Single lifting frame with quick release hook
- Foam collar
- Suspension seats
- GPS, radio, radar

Console:

FRP console small	50kg
FRP console medium with storage room	60kg
FRP console wide with storage room	70kg
FRP console with mid engine compartment	85kg



Inox protection with contra support:

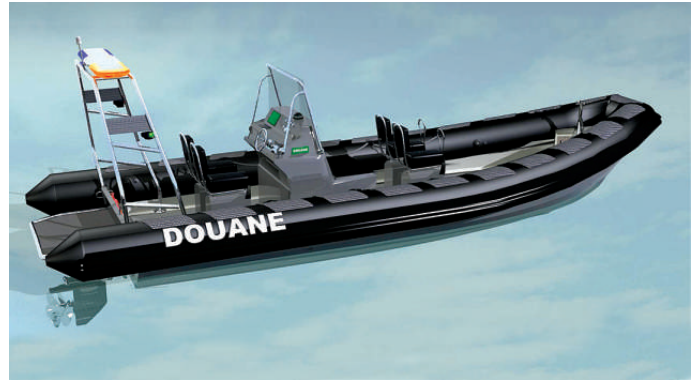
1/3 bow	30kg
1/1 bow	80kg



Patrol 8.2m

Specifications:

Length (meters)	8.20m
Beam (meters)	2.95/3.00m
Draft (meters)	0.45m
Tube (meters)	0.55/0.60m
Weight (kilogram)	1,210kg
Fuel tank	200l
Max persons	14



Options:

- Outboard engine max 2 x 250 hp
- Max 350hp inboard
- Radar beam
- Self righting system
- Single lifting frame with quick release hook
- Foam collar
- Suspension seats
- GPS, radio, radar

Console:

FRP console small	50kg
FRP console medium with storage room	60kg
FRP console wide with storage room	70kg
FRP console with mid engine compartment	85kg

Inox protection with contra support:

1/3 bow	30kg
1/1 bow	80kg



Patrol 9.2m

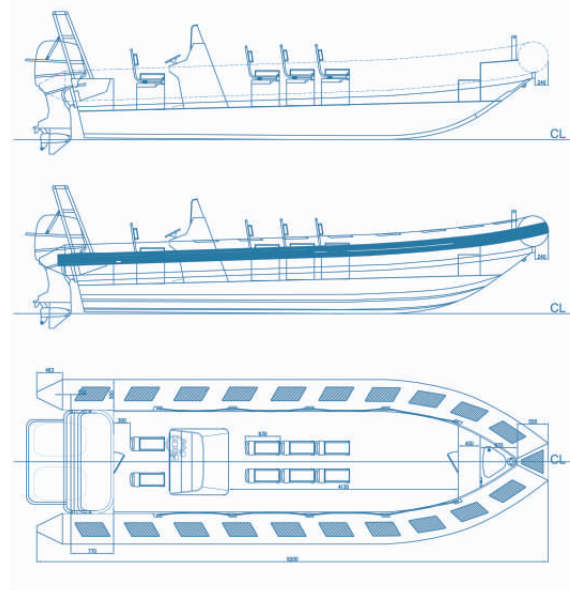
Specifications:

Length (meters)	9.20m
Beam (meters)	2.95/3.00m
Draft (meters)	0.45m
Tube (meters)	0.55/0.60m
Weight (kilogram)	1,270kg
Fuel tank	200l
Max persons	16



Options:

- Outboard engine max 2 x 250 hp
- Max 350hp inboard
- Radar beam
- Self righting system
- Single lifting frame with quick release hook
- Foam collar
- Suspension seats
- GPS, radio, radar



Console:

FRP console small	50kg
FRP console medium with storage room	60kg
FRP console wide with storage room	70kg
FRP console with mid engine compartment	85kg

Inox protection with contra support:

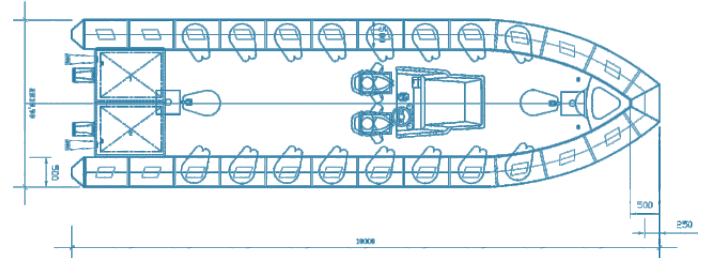
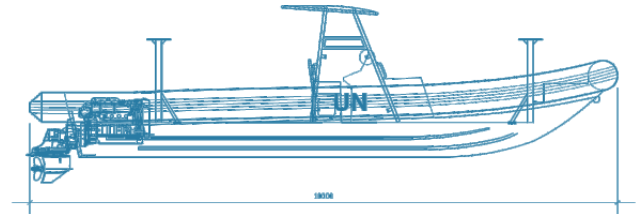
1/3 bow	30kg
1/1 bow	80kg



Patrol 10.2m

Specifications:

Length (meters)	10.20m
Beam (meters)	2.95/3.00m
Draft (meters)	0.45m
Tube (meters)	0.55/0.60m
Weight (kilogram)	1,450kg
Fuel tank	200l
Max persons	18



Options:

- Outboard engine max 2 x 250 hp
- Max 350hp inboard
- Radar beam
- Self righting system
- Single lifting frame with quick release hook
- Foam collar
- Suspension seats
- GPS, radio, radar

Console:

FRP console small	50kg
FRP console medium with storage room	60kg
FRP console wide with storage room	70kg
FRP console with mid engine compartment	85kg

Inox protection with contra support:

1/3 bow	30kg
1/1 bow	80kg



Patrol 12,0m

Specifications:

Length (meters)	12.00m
Beam (meters)	3.40m
Draft (meters)	0.60m
Weight (kilogram)	2,800kg
Fuel tank	200l
Max persons	36



Options:

- Outboard engine max 2 x 250hp
- Max 350hp inboard
- Radar beam
- Self righting system
- Single lifting frame with quick release hook
- Foam tubes
- Suspension seats
- GPS, radio, radar

